

CBA-A19a LWD VISION RT 500MD

Format: VISION SERVICE RT 500MD Vertical Scale: 1:500 Graphics File Created: 28-Apr-2009 04:10

PIP SUMMARY

┆ arcVISION Gamma Ray

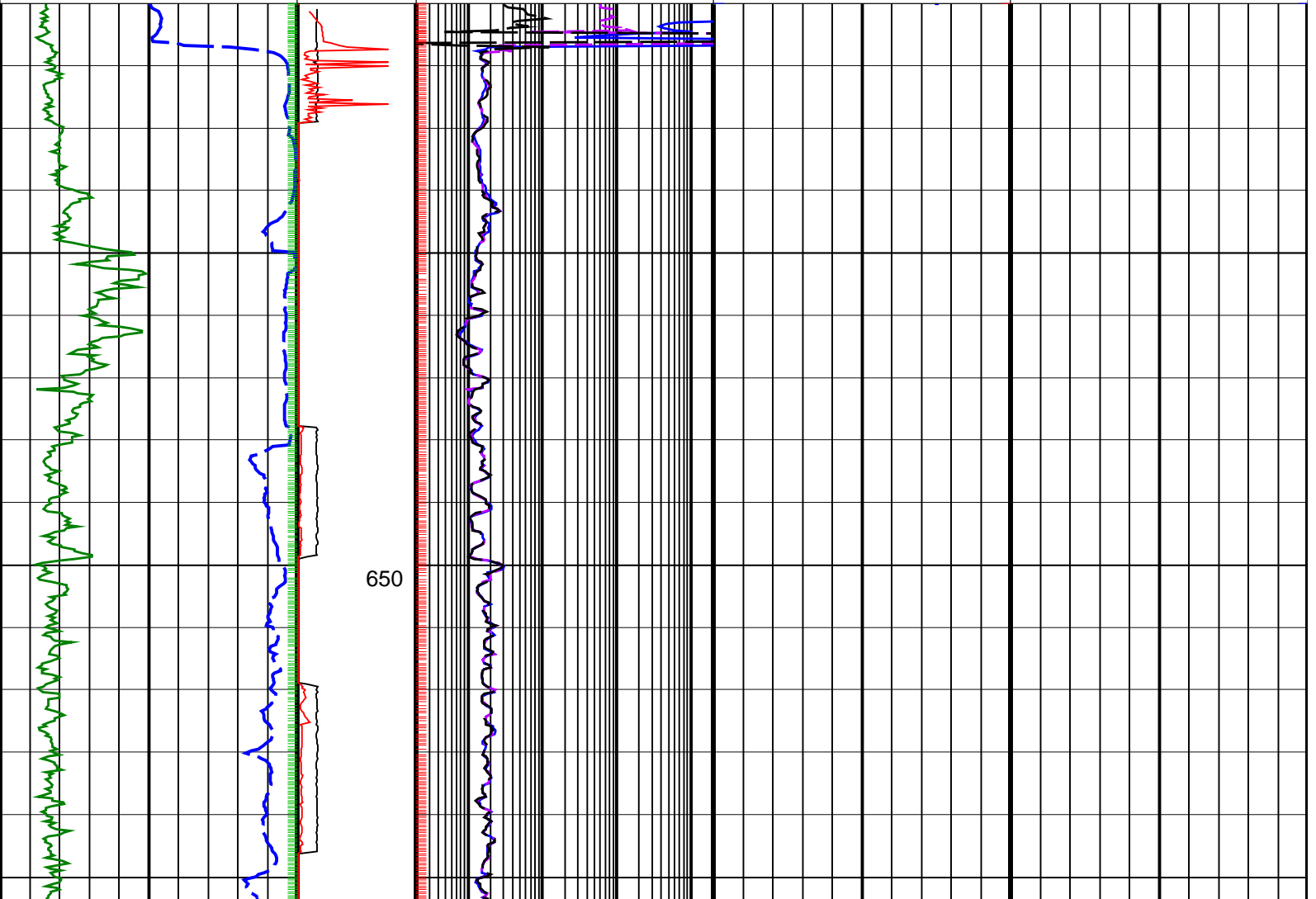
Delta-T Compressional, Real-Time ┆

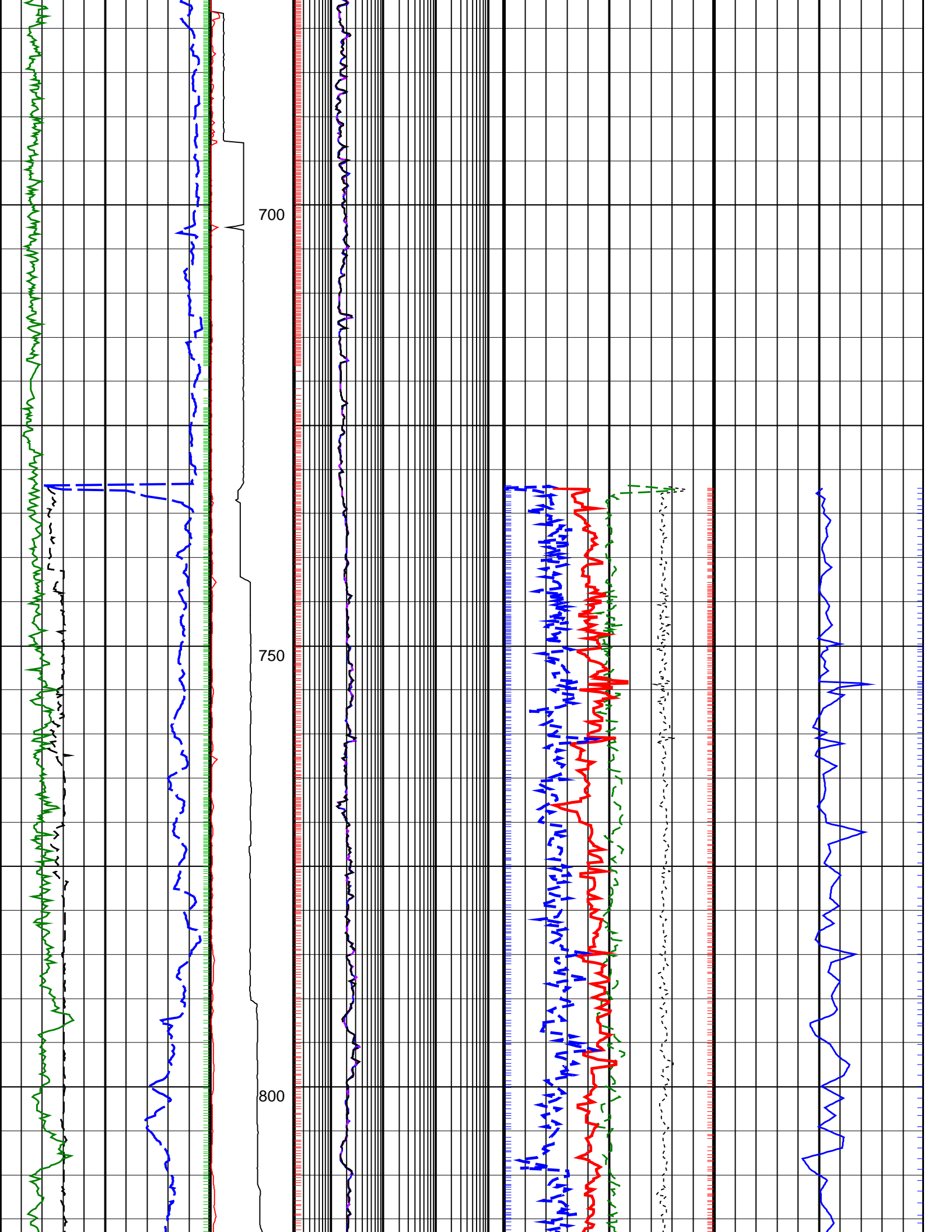
┆ Resistivity

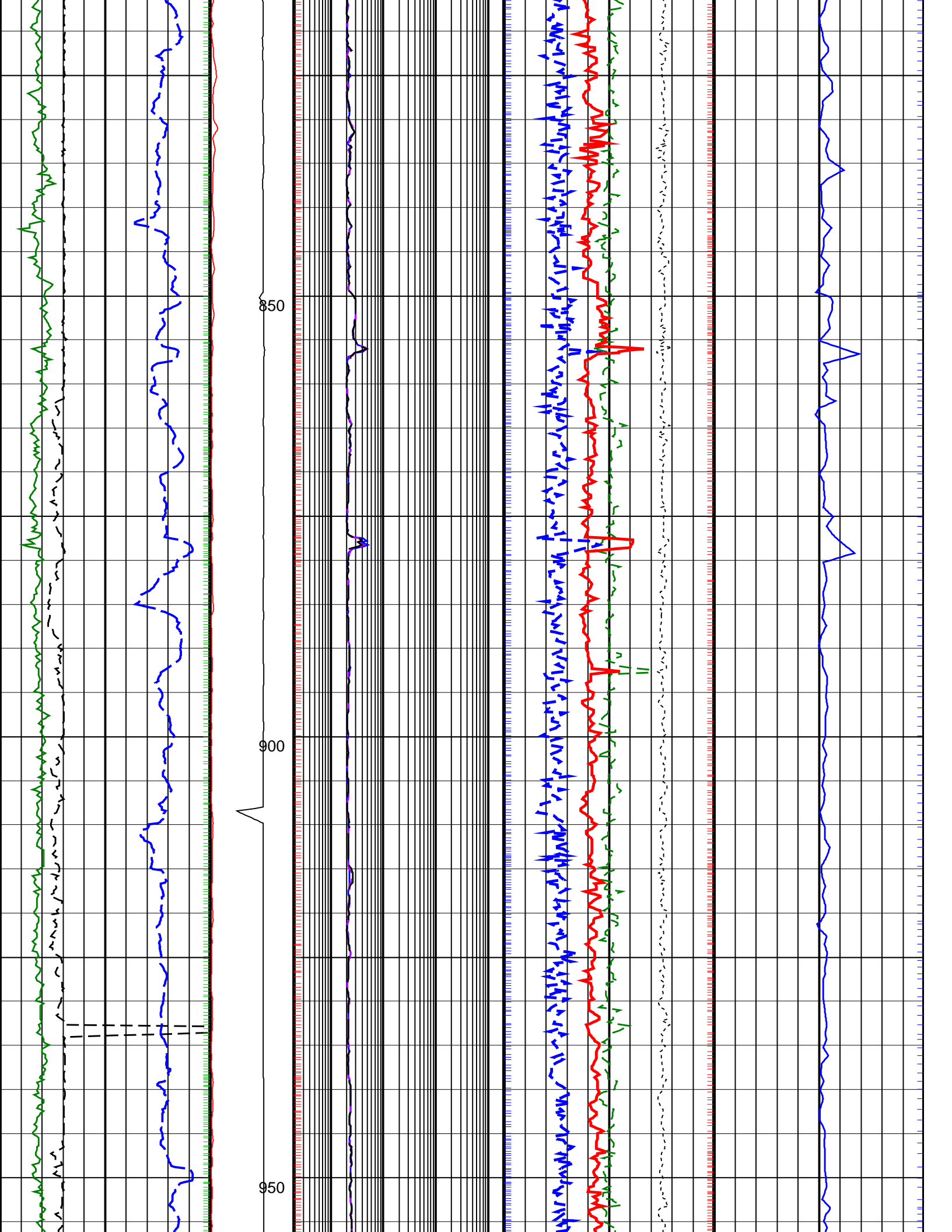
ROBB (Density Bottom) ┆

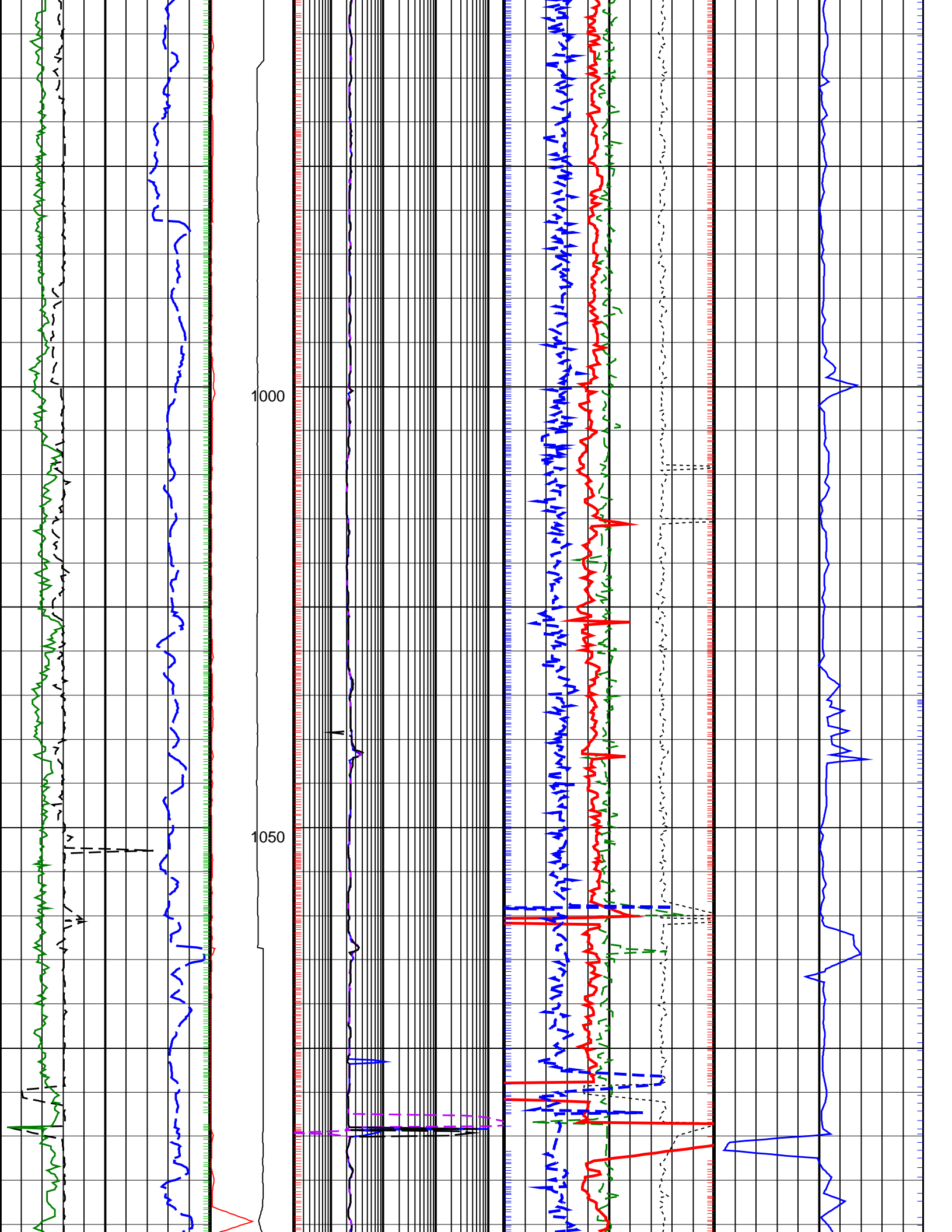
TNPH (Thermal Neutron Porosity) ┆

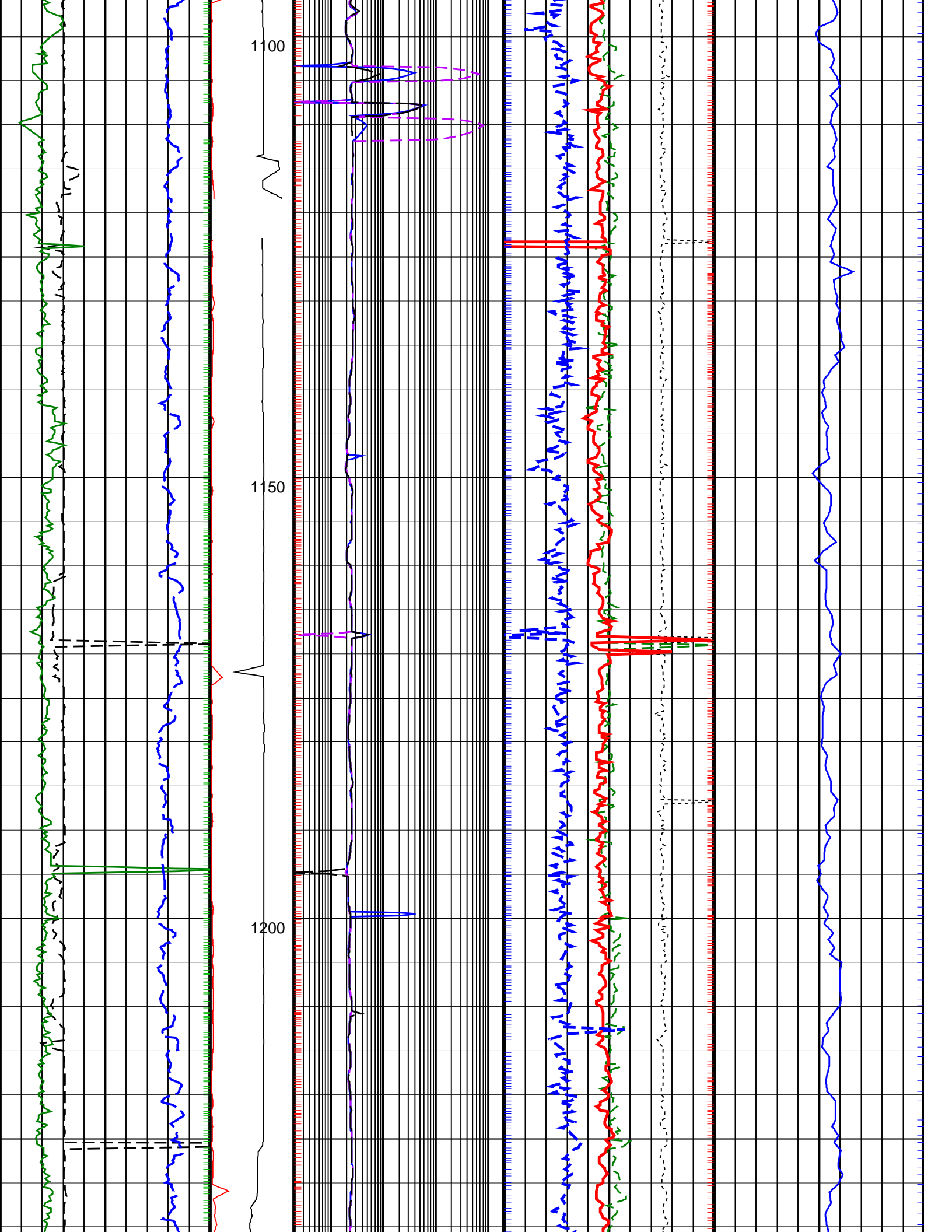
				Thermal Neutron Porosity, Real-Time (TNPH_ADN_RT) 45 (PU) -15	
ARC Gamma Ray, Real-Time (ARC_GR_RT) 0 (GAPI) 200		ARC BHCorr Phase-Shift Resistivity 40-in. at 2 MHz, Real-Time (P40H_RT) 0.2 (OHMM) 2000		Bulk Density, Bottom, Real-Time Computed Downhole (ROBB_DH_RT) 1.85 (G/C3) 2.85	
Average Borehole Diameter, Real-Time (ADIA_ADN_RT) 6 (IN) 16		MWD Collar RPM (CRPM_RT) (RPM) 0 250		ARC BHCorr Phase-Shift Resistivity 28-in. at 2 MHz, Real-Time (P28H_RT) 0.2 (OHMM) 2000	
Photoelectric Factor, Bottom, Real-Time (PEB_RT) 0 (----) 10		PKPK_RPM (Stick_RT) (RPM) 0 500		ARC BHCorr Phase-Shift Resistivity 16-in. at 2 MHz, Real-Time (P16H_RT) 0.2 (OHMM) 2000	
ROP*5 (ROP5) (M/HR) 200 0		Bulk Density Correction, Bottom, Real-Time Computed Downhole (DRHB_DH_RT) -0.75 (G/C3) 0.25		Delta-T Compressional, Real-Time (DTCO_RT) 600 (US/M) 100	

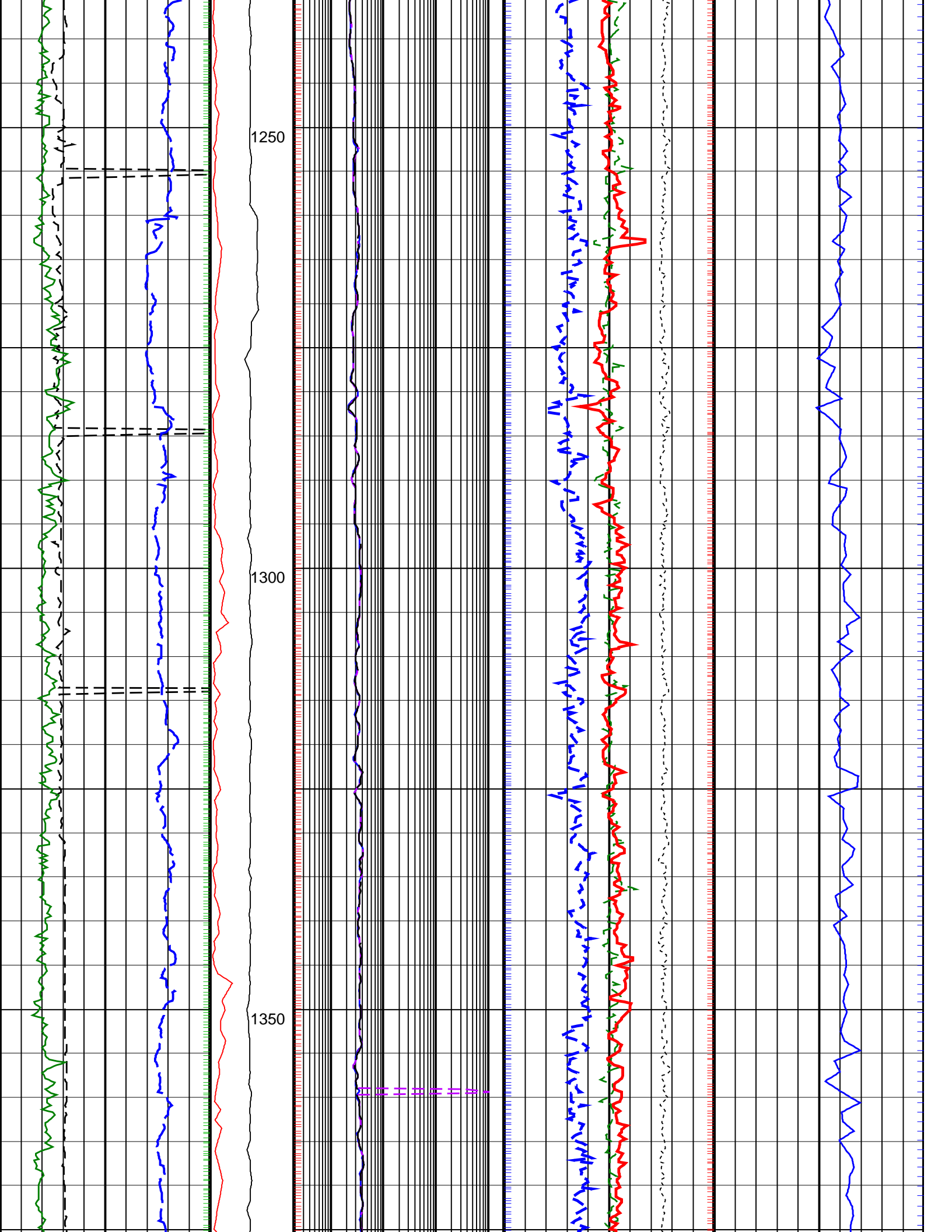


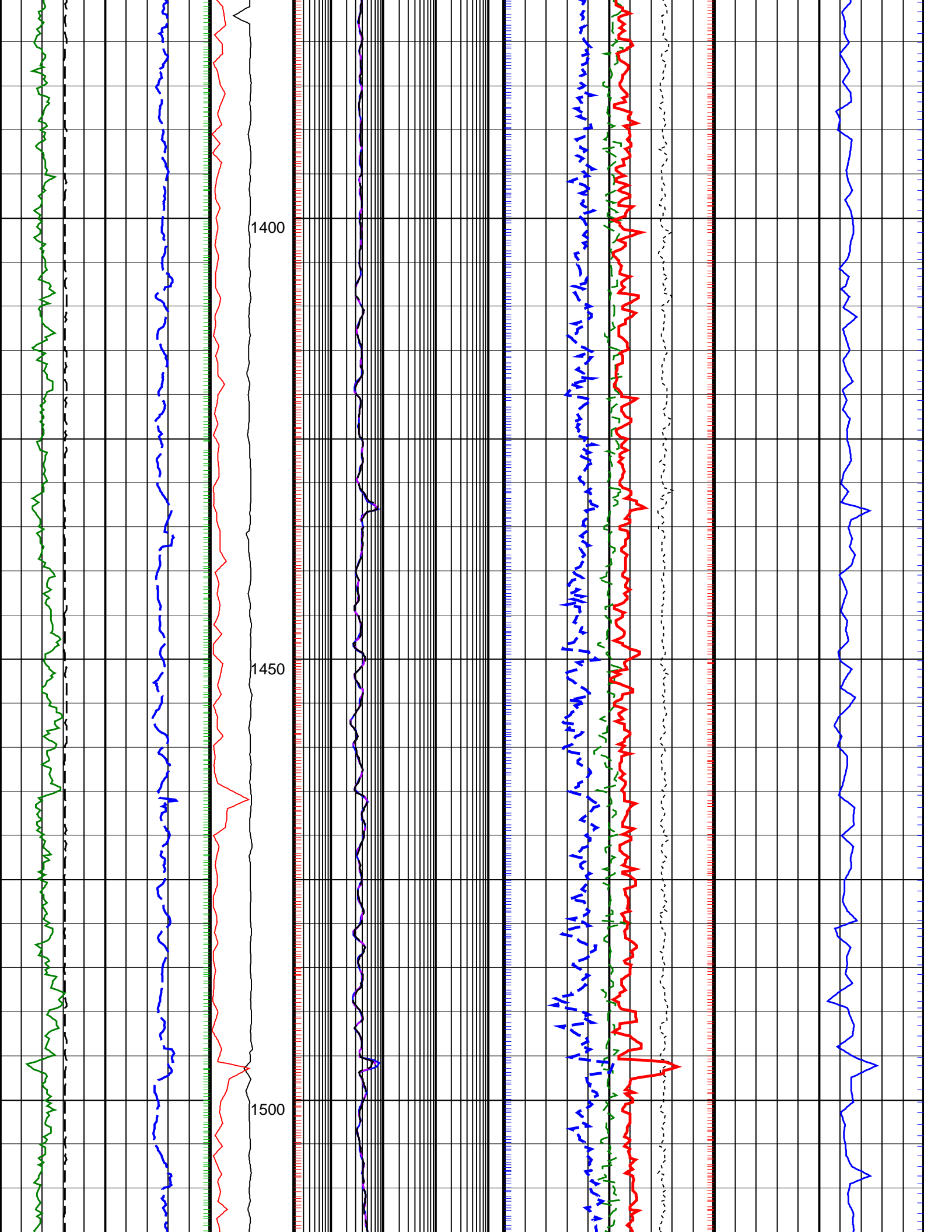


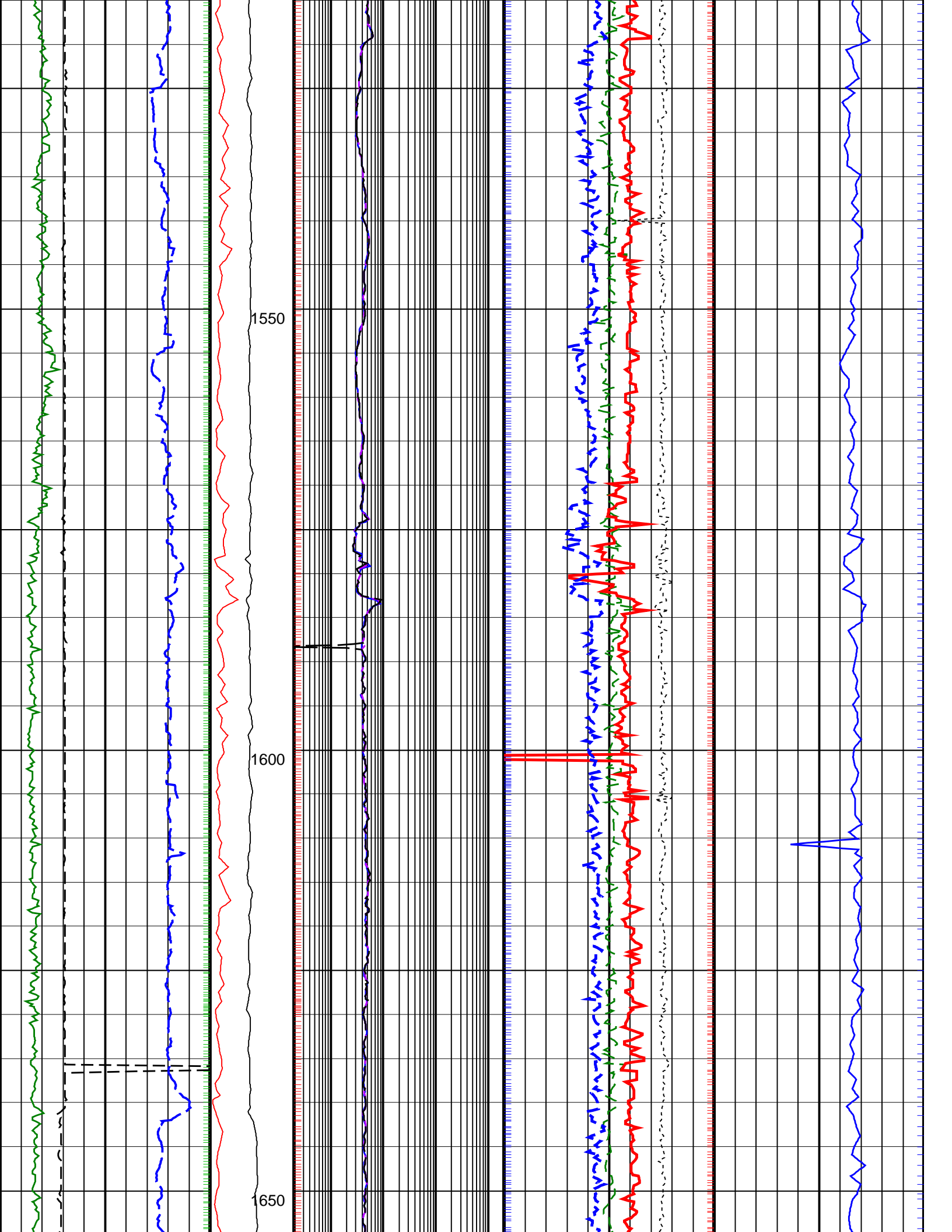


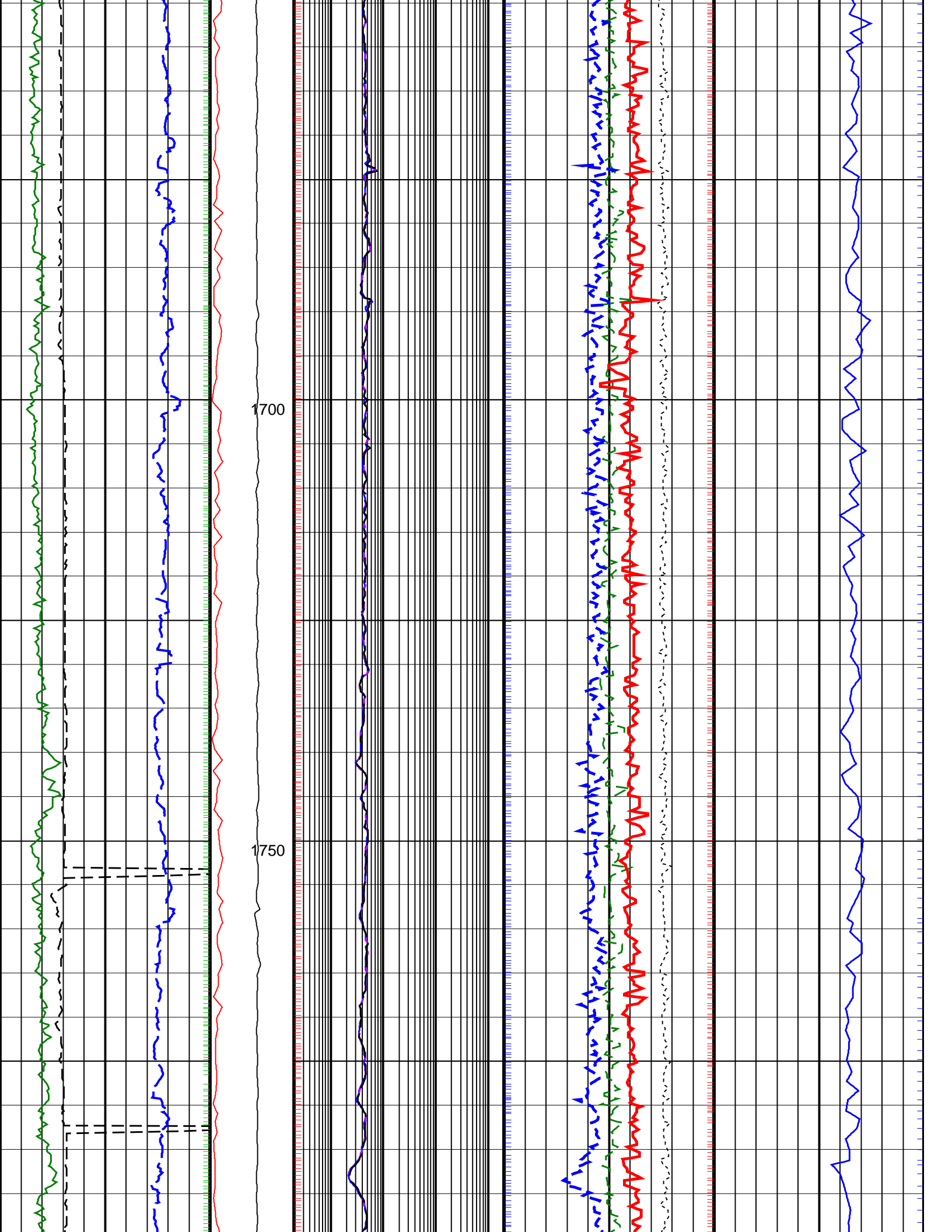


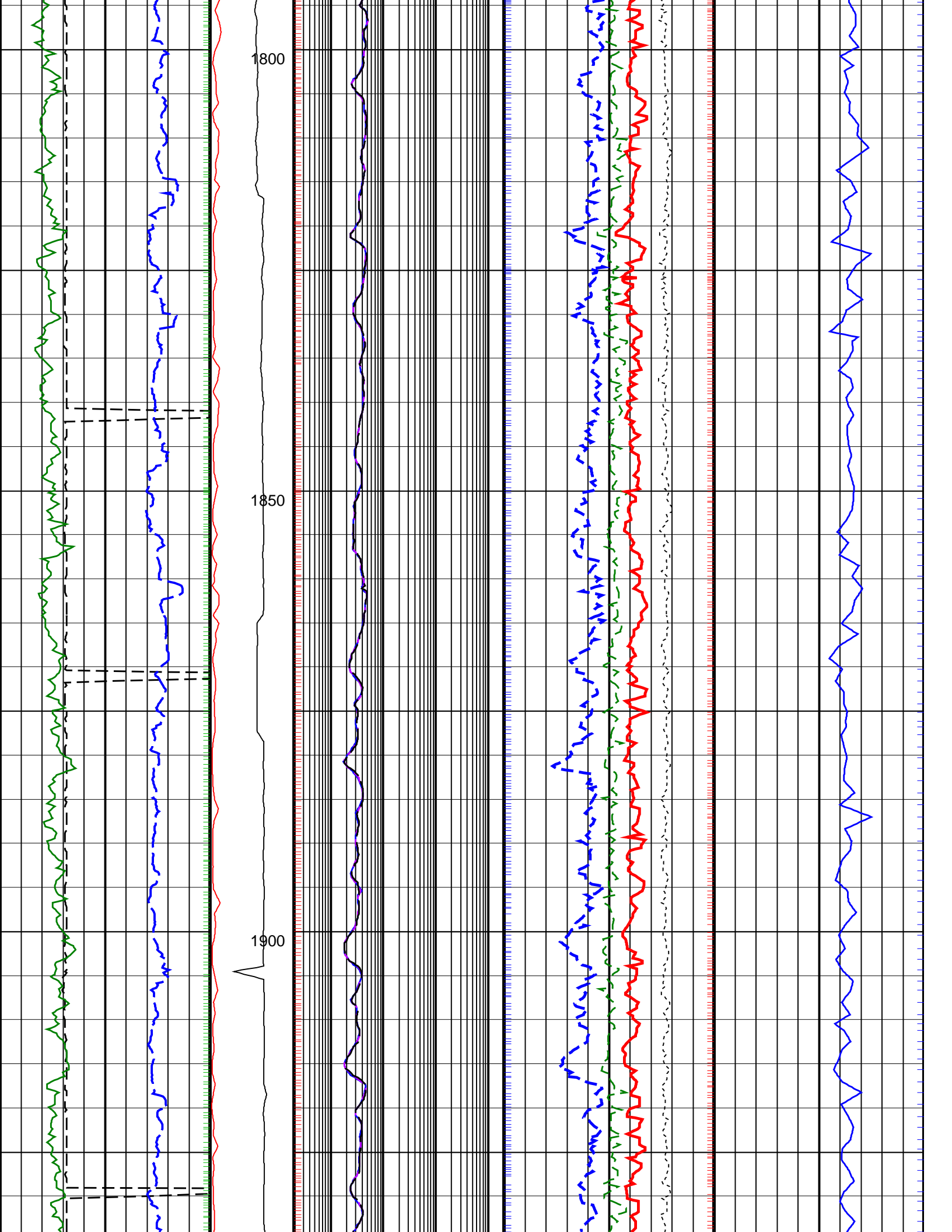


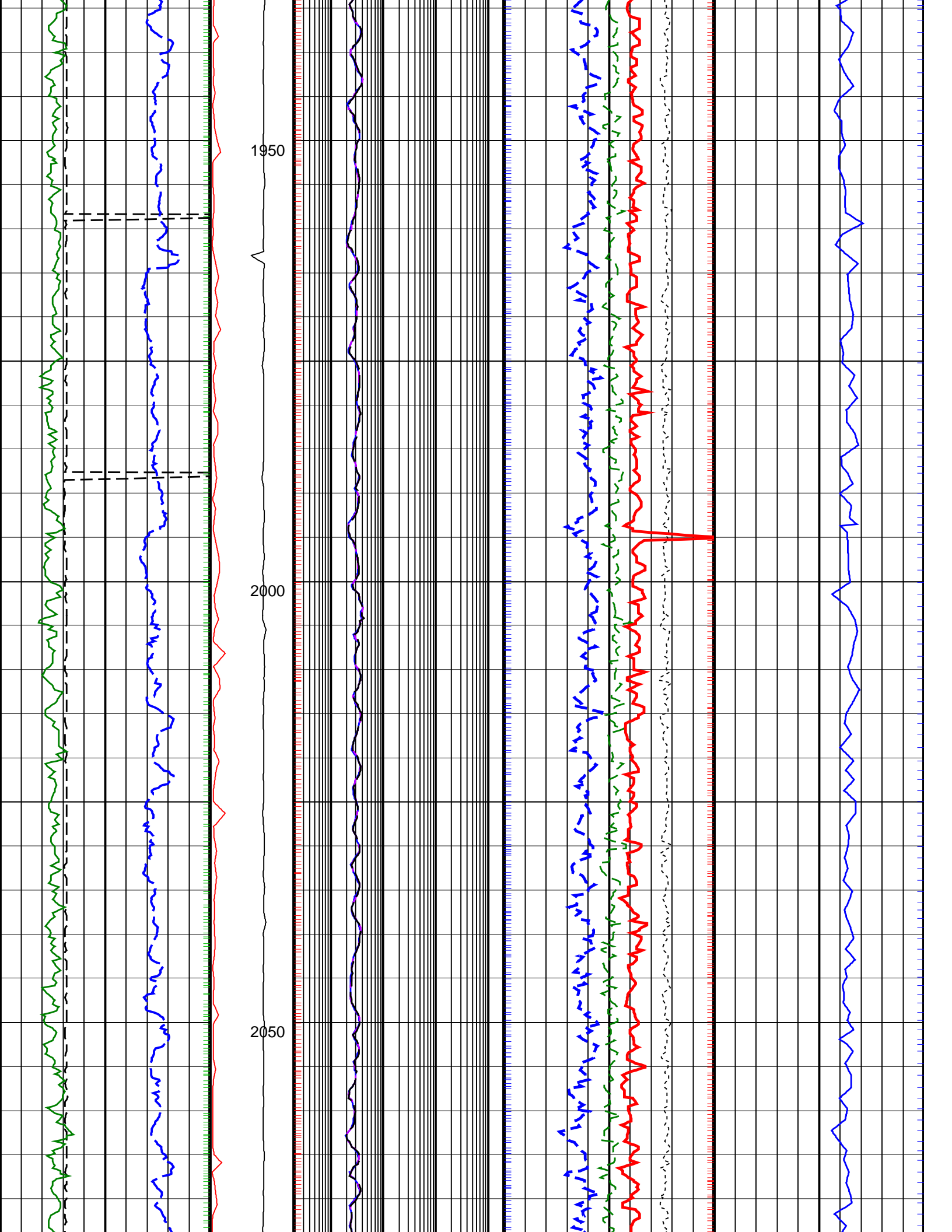


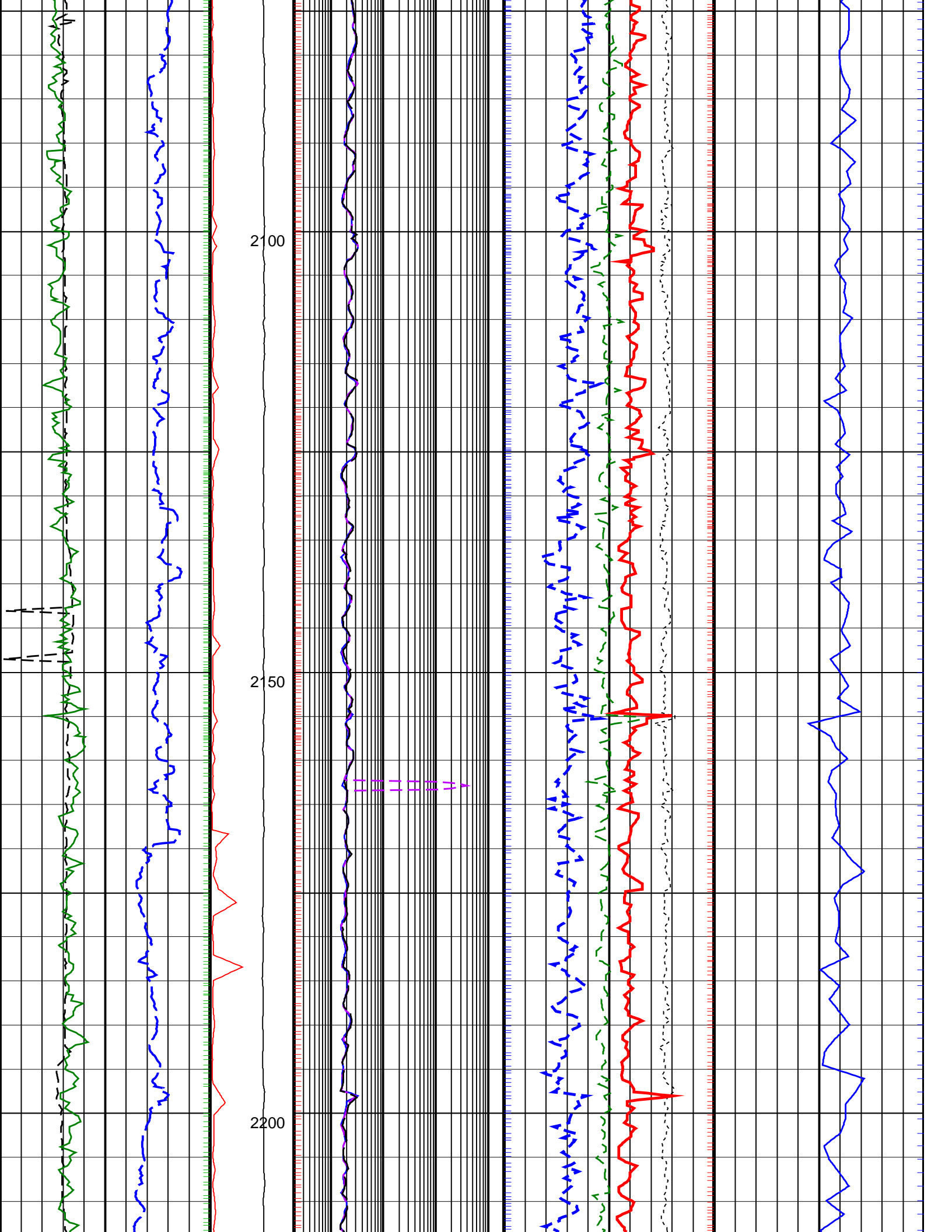


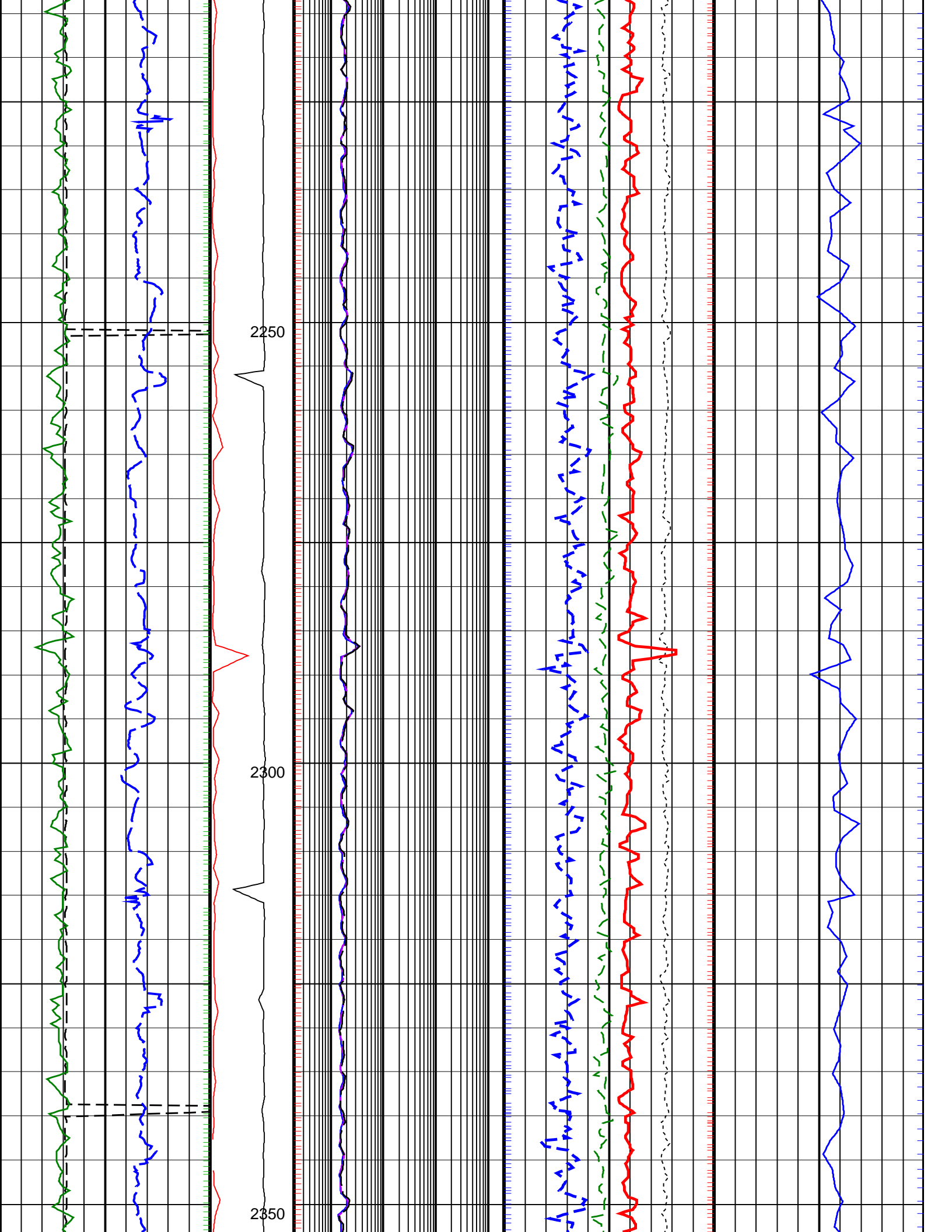


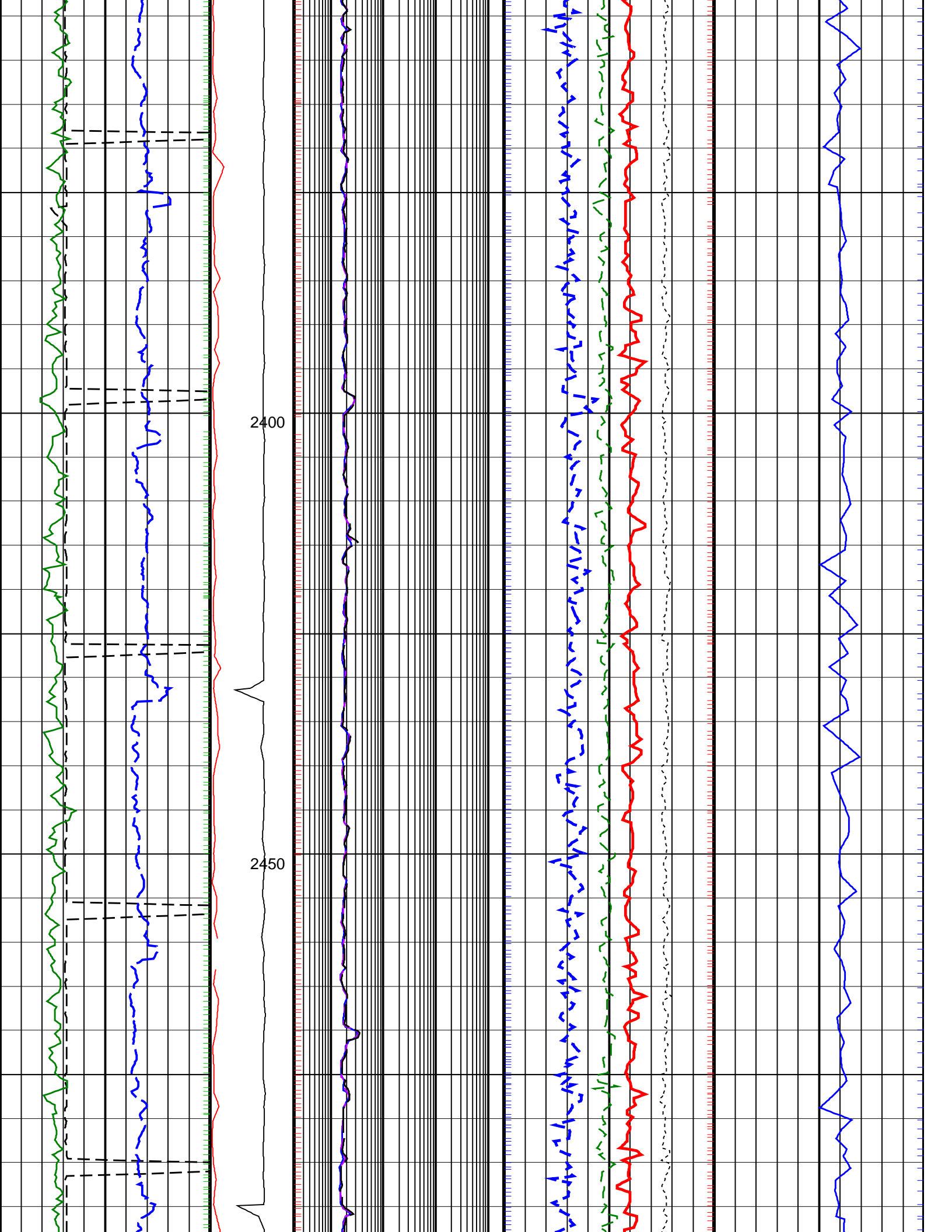


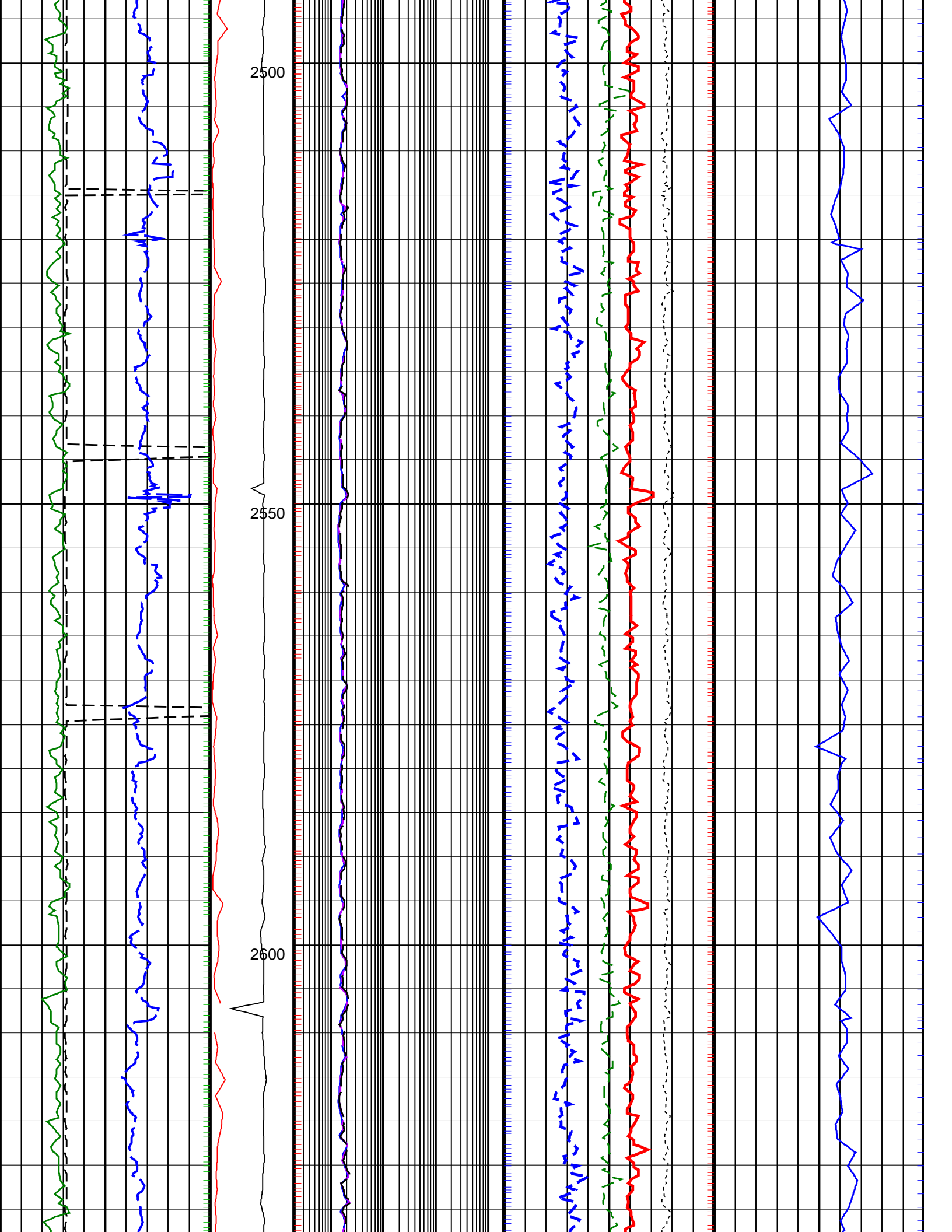


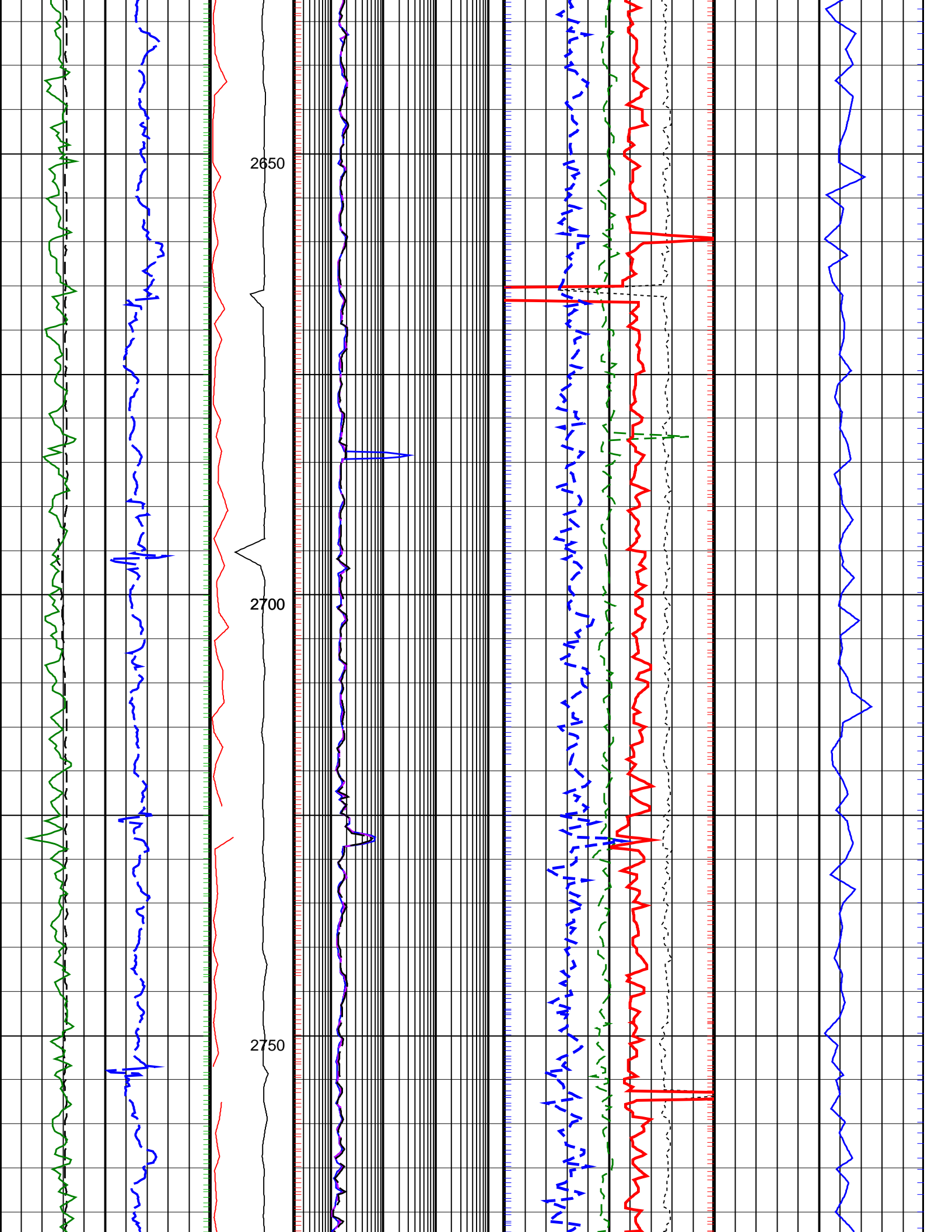


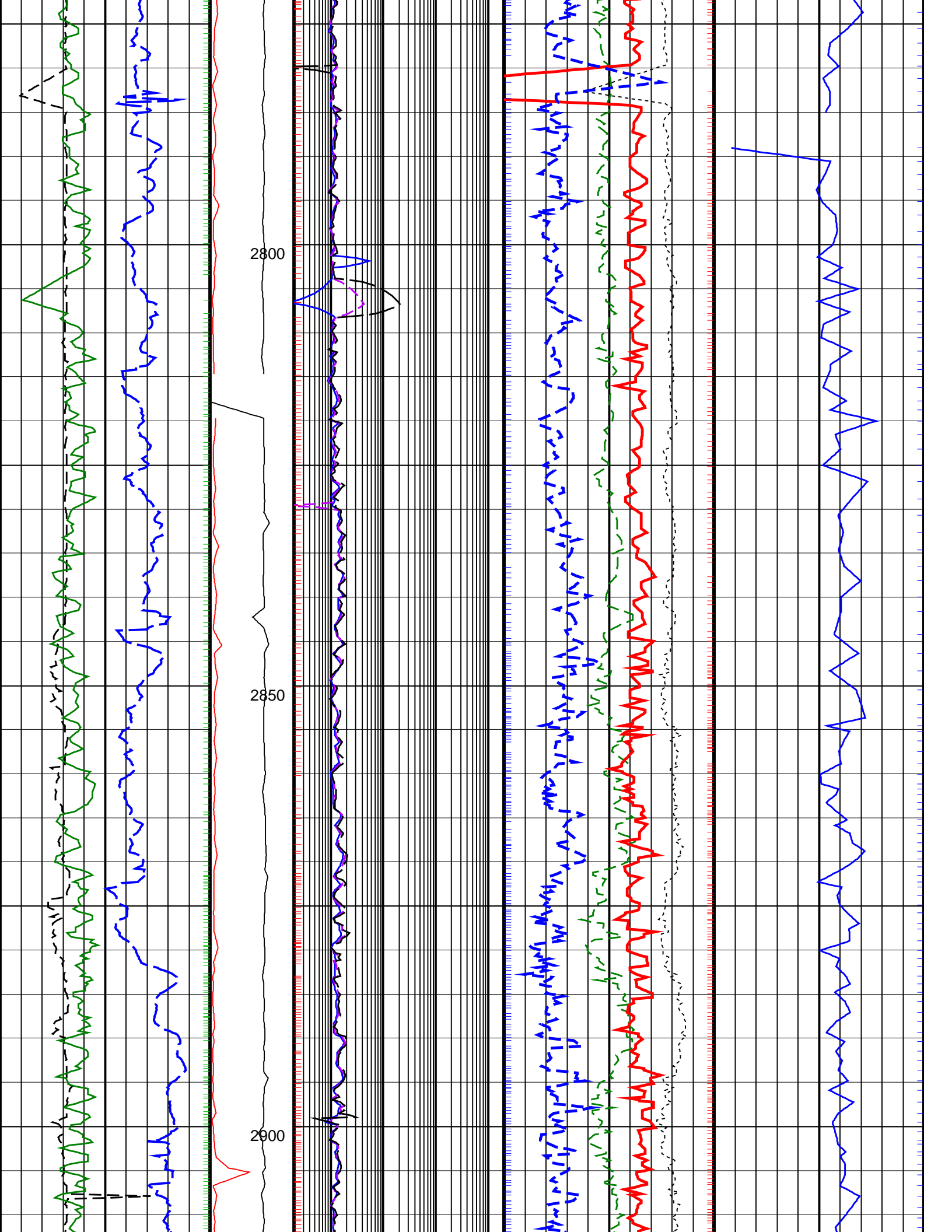


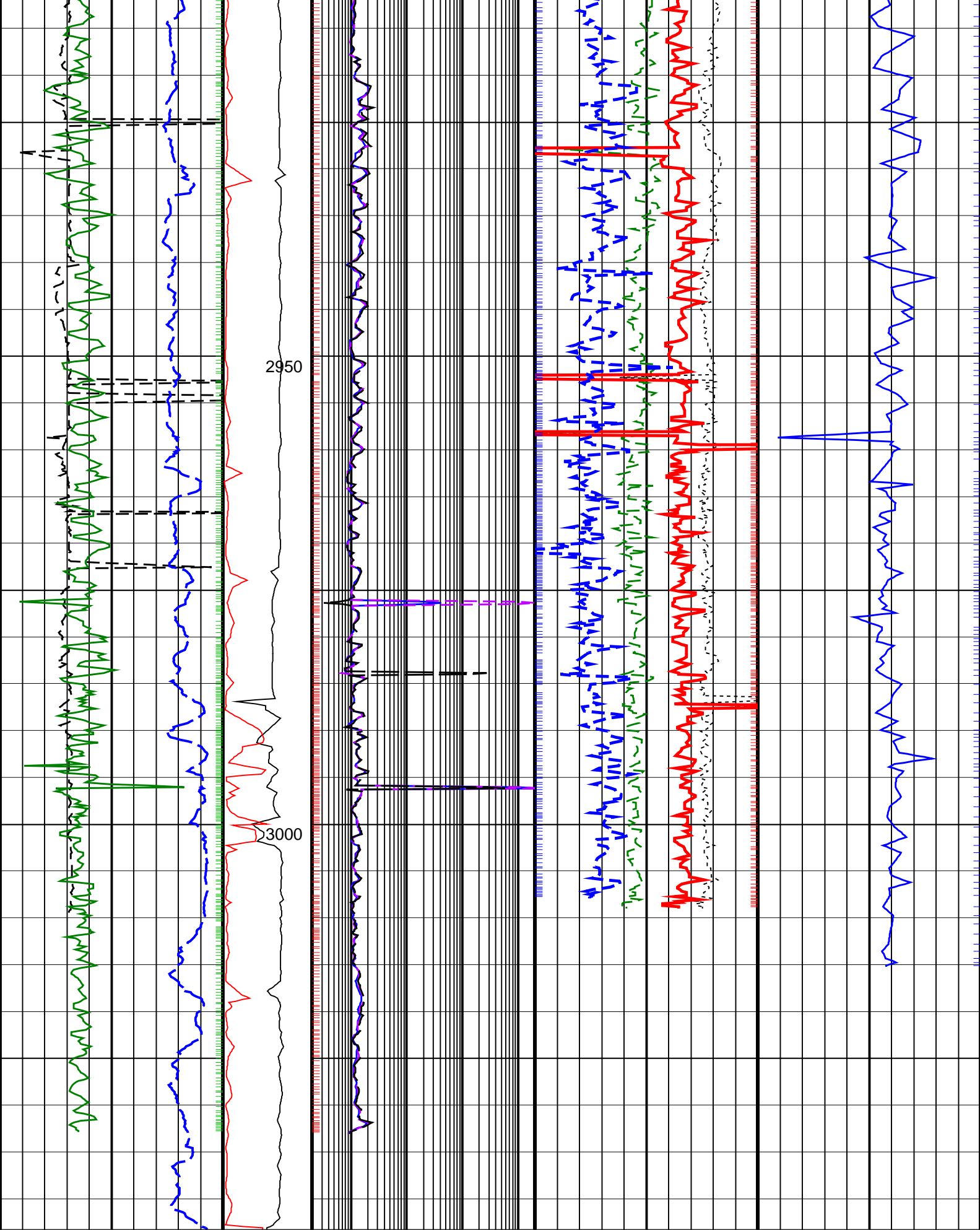












<p>ROP*5 (ROP5) (M/HR)</p> <p>200 0</p>	<p>PKPK_RPM (Stick_RT) (RPM)</p> <p>0 500</p>	<p>ARC BHCorr Phase-Shift Resistivity 16-in. at 2 MHz, Real-Time (P16H_RT)</p> <p>0.2 (OHMM) 2000</p>	<p>Bulk Density Correction, Bottom, Real-Time Computed Downhole (DRHB_DH_RT)</p> <p>-0.75 (G/C3) 0.25</p>	<p>Delta-T Compressional, Real-Time (DTCO_RT)</p> <p>600 (US/M) 100</p>
--	--	--	--	--

Average Borehole Diameter, Real-Time (ADIA_ADN_RT) 6 (IN) 16	MWD Collar RPM (CRPM_RT) (RPM) 0 250	ARC BHCorr Phase-Shift Resistivity 28-in. at 2 MHz, Real-Time (P28H_RT) 0.2 (OHMM) 2000	Photoelectric Factor, Bottom, Real-Time (PEB_RT) 0 (----) 10
ARC Gamma Ray, Real-Time (ARC_GR_RT) 0 (GAPI) 200		ARC BHCorr Phase-Shift Resistivity 40-in. at 2 MHz, Real-Time (P40H_RT) 0.2 (OHMM) 2000	Bulk Density, Bottom, Real-Time Computed Downhole (ROBB_DH_RT) 1.85 (G/C3) 2.85
			Thermal Neutron Porosity, Real-Time (TNPH_ADN_RT) 45 (PU) -15

PIP SUMMARY

arcVISION Gamma Ray

Delta-T Compressional, Real-Time

Resistivity

ROBB (Density Bottom)

TNPH (Thermal Neutron Porosity)

IDEAL Version: ID14_0C_11

IDF

ARC6A-AA
SON675

id14_0c_11
id14_0c_11

MWD_10
ADN

id14_0c_11
id14_0c_11